

# SonoBook™ 9

Fast·Precise·Cutting-edge



Auto-ambient  
adjustment



WIFI



Green



SSD  
Instant





Never  
compromise **performance**  
For portability

- ✓ *What if a compact system could be so intuitive that it can be operated without a manual?*
- ✓ *What if a compact system could respond instantly between different modes?*
- ✓ *What if a compact system could operate for an entire work day with only one battery charge?*
- ✓ *What if a compact system could weigh as little as 12 lbs?*
- ✓ *What if a compact system could detect ultra-slow velocity  $< 2\text{cm/s}$  on tiny vessels , and also not miss the high velocity  $> 40\text{m/s}$  on cardiac?*
- ✓ *What if a compact system could image superficial tissues within 2mm and achieve more than 30cm of depth clearly on a 250 lbs difficult patient?*

**SonoBook™ 9** is the answer.



## Cardiovascular

- Instant response.
- Innovative transducer technologies are used for extraordinary cardiac performance.
- Comprehensive cardiac measurement packages: Stress Echo, Auto IMT, Semi-automatic Simpson measurement, PISA, and etc.
- User-definable cardiac measurement workflow.
- Comprehensive range of probes for cardiac scanning: TEE, Pencil & Phased array.



## Radiology

- Versatile probe range covering 1.5 MHz-23 MHz.
- Efficient workflow to meet different environments.
- Real-time curved panoramic imaging.
- Advanced technologies: Q-beam, Q-flow, Q-image, FHI, X-contrast.
- Extraordinary performance for easy diagnosis.
- Probes: Convex, Linear, Transvaginal, Transrectal, Micro-Convex, etc.



## Women's Healthcare

- Auto-trace measurement for breast lesions and follicles.
- Quantitative elastography analysis for breast.
- IVF procedures: Multiple follicles report, Dedicate EPU kit.
- Auto NT measurement, 4D, virtual HD, depth view for OB, etc.
- Multi-slice imaging for detailed diagnosis of fetal defects.
- Probes: Convex, 4D, Linear, Wide angle transvaginal (up to 210°), High density probe.



## Anaesthesia

- Superior anaesthesia performance.
- Super Needle visualize the needle better without degrading the image.
- 2D steer.
- Multi zoom function for tiny structures, Full screen to enlarge the image area.
- Probe: 192 elements linear, 18MHz high frequency probe, button-probe.



## Critical Care

- Truly portable design < 12 lbs.
- Fast and reliable performance.
- Dedicated process for ICU purpose.
- Triple probe connector and precision cart (Option).
- Instant response.
- Excellent battery life, up to 2 hours of continuous use in active mode, up to 1 week in standby mode.
- Probe: Phased array, Convex, Linear, Micro-convex, button-probe.



## Emergency

- Fast boot-up.
- Longer battery life up to 2 hours active mode, fast battery swap.
- Auto-ambient adjustment according to indoor and outdoor environment.
- Durable & Robust design for challenging environment.
- Probe: Phased array, Linear, TV, button-probe.
- Built-in FAST preset.
- Wifi-compatible.

# Small Outside Huge Inside

## Ultra

- Ultra-Light < 12 lbs (with battery)
- Ultra-Slim
- Ultra-compact
- Ultra-deep penetration > 30cm
- Ultra-superficial observation < 2mm
- Ultra-slow velocity detection < 2cm/s
- Ultra-high velocity detection > 40m/s (probe-dependent)

## Faster

- Boot up < 1min
- Shut down < 12s
- Still image and cine can be saved in 1s
- Instant switch between different modes & measurements

## Wider

- Versatile solutions: Cardiovascular, Radiology, Internal Medicine, Small Parts, General Imaging, Vascular, Intensive care, Emergency, MSK, ICU
- Supports 27 kinds of probes
- Covering 1.5 MHz - 23 MHz frequency range
- 192 elements high density probe
- Intra-operational probe (available)
- TEE probe (available)
- Innovative probe (available)
- Large Storage Size (10 thousands of images and cines)

## More Connectable

- Intelligent patients' data management
- SonoDocking: DVI-I, Foot-Switch, Video-Out, remote, S-Video
- USB 3.0
- Wifi-Compatible
- DICOM: Structure report, worklist, storage, print

## Smarter

- AIO (Automatic Image Optimization for B mode & D mode)
- Auto Measurement: Auto IMT, Auto NT, Auto -trace for PW, Auto-trace for follicles and breast lesions
- User-defined workflow
- Auto-ambient adjustment tailor to indoor & outdoor uses.

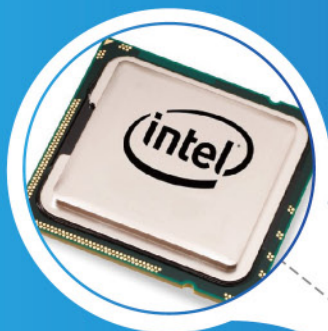
## Greener

- SSD for lower power consumption
- Standby mode to save energy
- Auto-ambient adjustment to save battery life
- Low heat and noise design
- Up to 1 week battery life in standby mode
- Up to 2 hours of continuous use in active mode



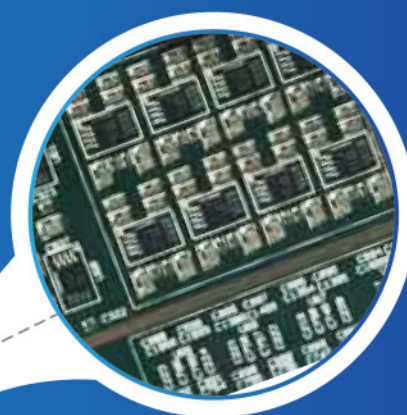
Multipurpose suitcase: either as your backpack, or as carrying case.

# High-Performance Architecture



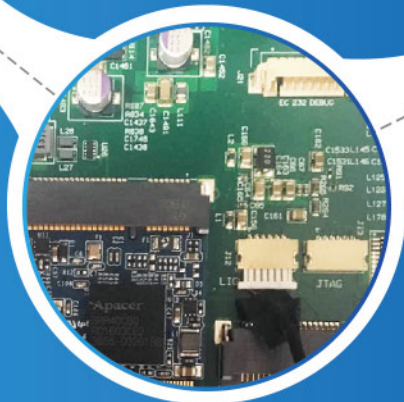
⊕ **WIFI,SSD,4D,ECG**

HIGHLY INTEGRATED  
POWERFUL MODULE



⊕ **PC**

HIGH PERFORMANCE  
INTEL PC PLATFORM

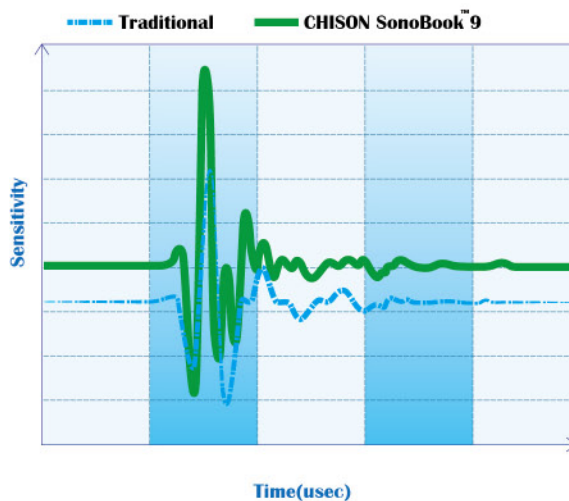
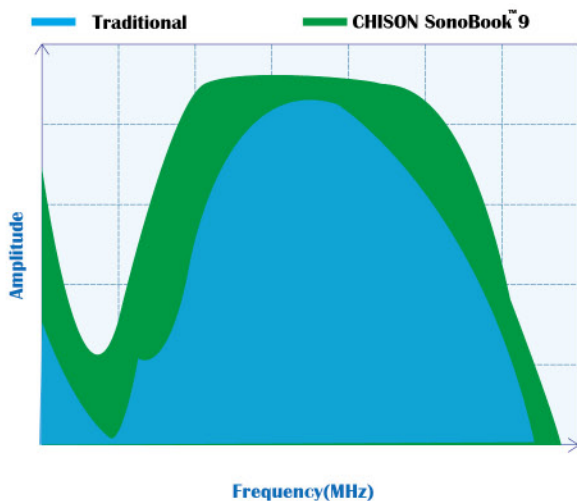


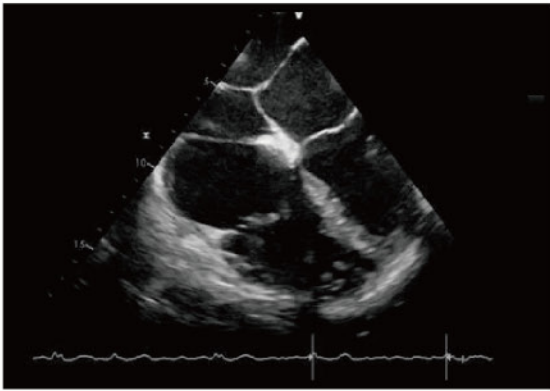
⊕ **TX/RX**

THE CUTTING EDGE  
TX/RX PLATFORM

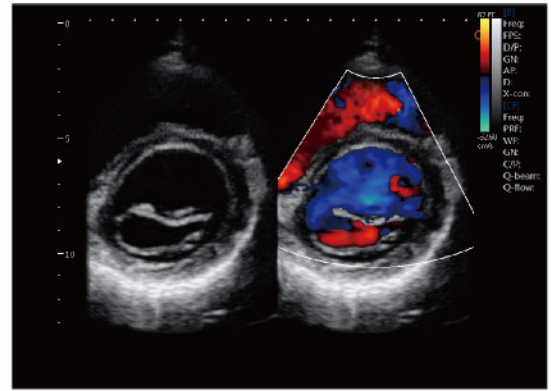
## Innovative Transducer Technologies

SonoBook™ 9 uses the latest advances in transducer technology, which has wider bandwidth, higher sensitivity and better signal-noise ratio, providing superb anatomic details to users, delivering excellent resolution and penetration, especially during difficult-patient scanning.

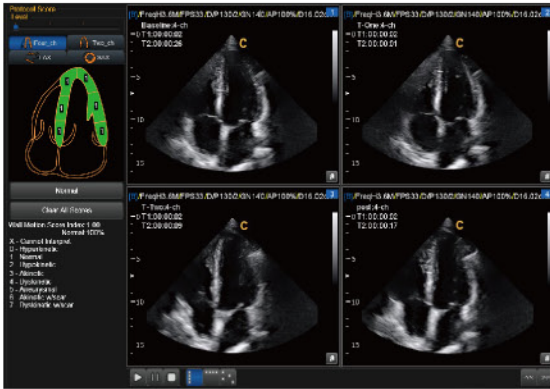




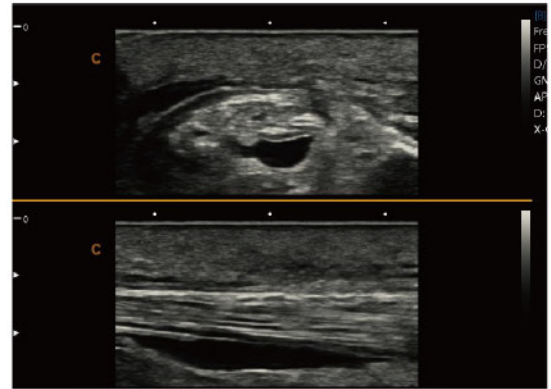
Cardiac, TEE



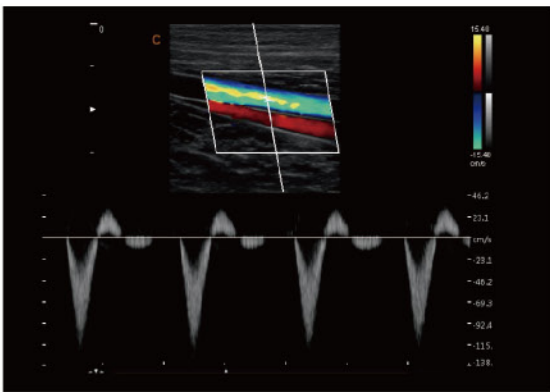
Short axis of mitral valve , B/BC Mode



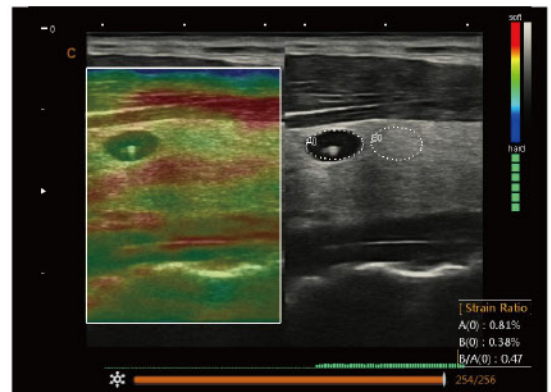
Stress Echo



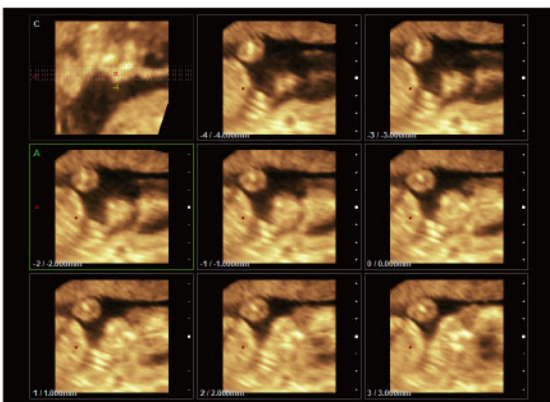
MSK, B Mode



Vessel, PW mode



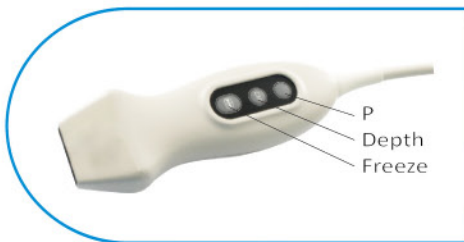
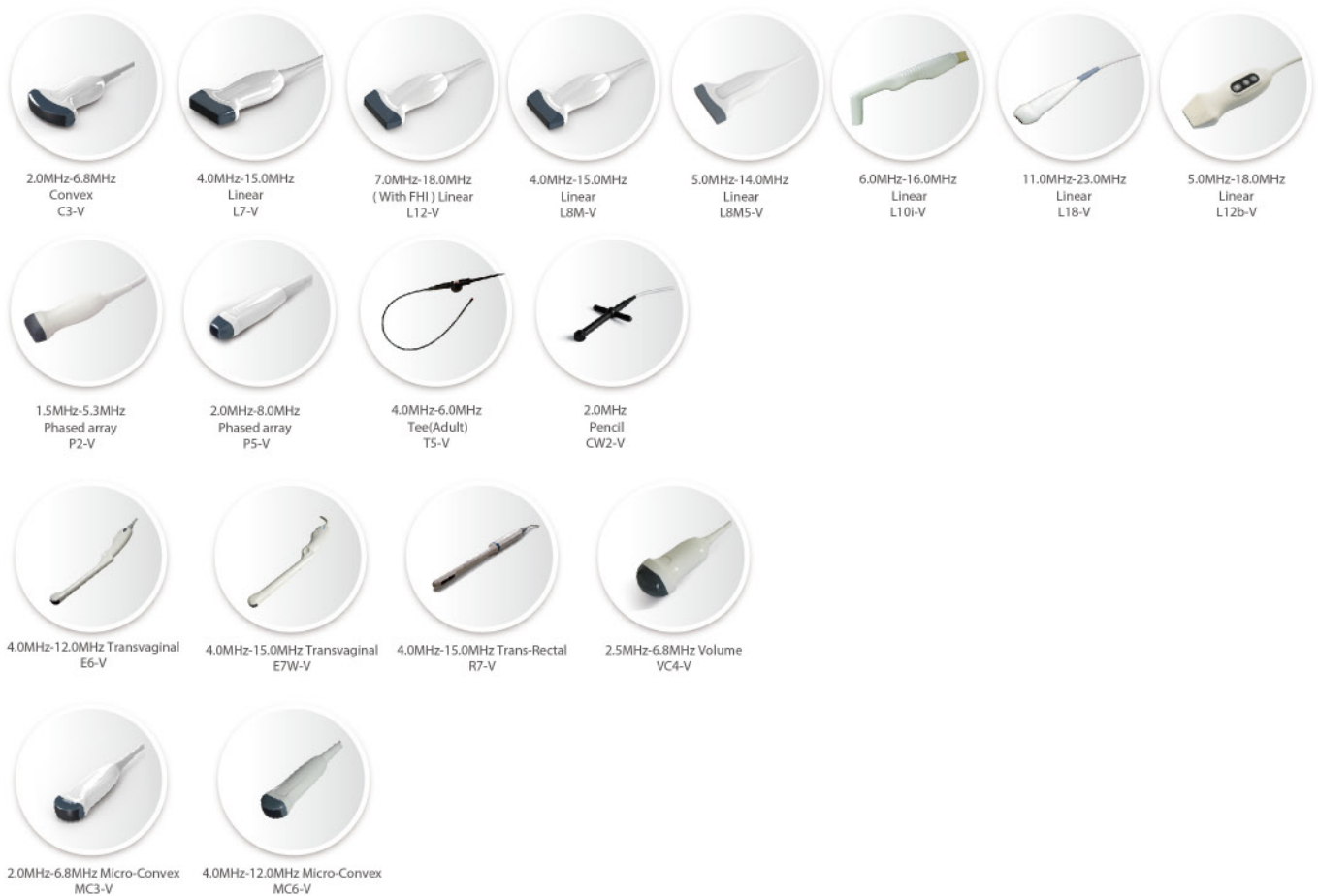
Thyroid nodule, Elastography



Fetal profile, 4D Multi-slice, 24 weeks



Auto-trace follicle measurement



## Button-probe

- Remote control of the system through probe buttons, free your left hand for other important work.
- Program the **P** button, for simple, fast and precise use.
- Provide immediate image refinement with one click.
- Easy control & easy hold.

CHISON Medical Technologies Co., Ltd.

**Sales & Service Contact Address:**

No.9, Xinhuihuan Road, Xinwu District, Wuxi, Jiangsu, China 214028

**TEL :** 0086-510-85310593 / 85310937

**FAX :** 0086-510-85310726

**EMAIL :** export@chison.com.cn

We reserve the right to make changes to this catalogue without prior notice  
Please contact our local dealer for the latest information.

SonoBook 9-20170925