

WWW.CHISON.COM



# ECO6

More Advanced **More** Powerful

**CHISON**  
Value Beyond Imaging

# *More advanced* *More Powerful*

As a new member of ECO family, ECO6, has considered the most frequent request of users, adding more advanced features and capabilities inside this ultra-compact body, to provide better patient care.



# Easy to operate      Easy to go



**ONE KEY** to selected the desired application with automatic preset



**ONE KEY** to optimize the image automatically



**ONE KEY** to save still image and CINE loop



**ONE KEY** to measure



**ONE KEY** to make report



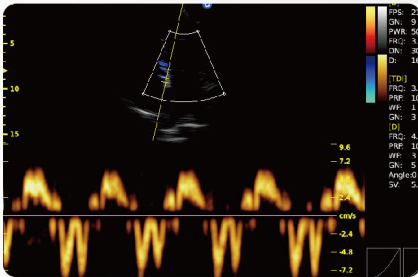
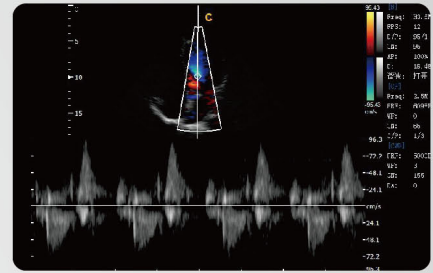
**ONE KEY** to print to PC or video printer (see page 4 option)



# More advanced

## Continuous Wave (CW) Doppler

Detect blood flow with high velocity and help doctors diagnose with more clinical information.

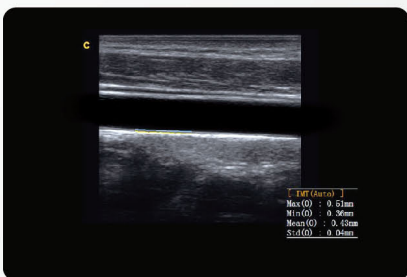
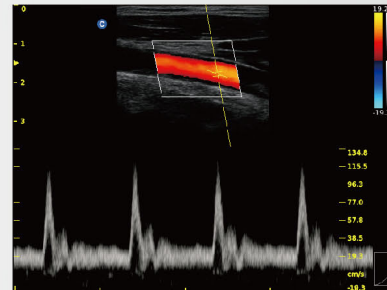


## Tissue Doppler Imaging (TDI)

Tissue Doppler imaging is a novel echocardiography technique that directly measures myocardial velocity. Systolic TD measurements assess left and right ventricular myocardial contractile function. Diastolic TD values reflect myocardial relaxation.

## Triplex

Triplex combines B, color, with PW to help the user make diagnosis more conveniently and more accurately, help to improve the efficiency

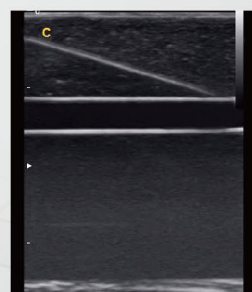


## Auto IMT Function

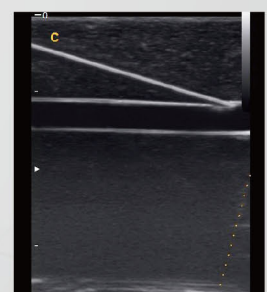
Automatically traces the intima, and measures the thickness of the intima. This allows you to measure the intima faster, more easily and more accurately.

## Super Needle

With Super Needle, clinicians can see needle inside tissue more clearly during medical procedures. Needle angle up to  $\pm 30^{\circ}$



Without Super Needle  
Needle is Not clear

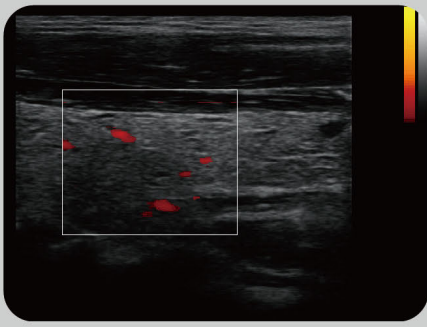


With Super Needle  
Needle is Better Visualized

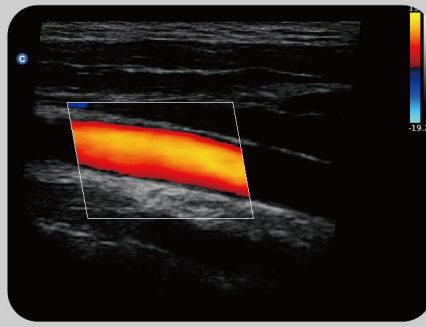
# *More Powerful*

- ✓ *Abdomen, OB/GYN, Urology, cardiac*
- ✓ *Phased array probe*
- ✓ *CW, TDI, B/BC, super needle*
- ✓ *2D steer, triplex, Auto IMT, Automatic pw trace, CPA,DPD*

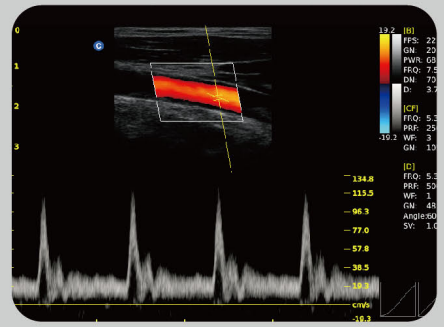




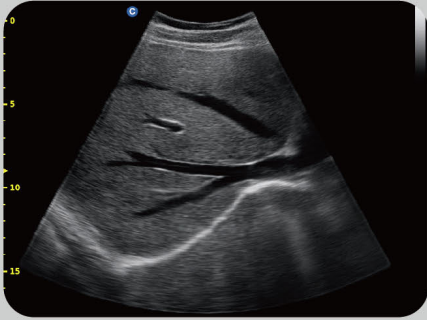
Thyroid, CPA Mode



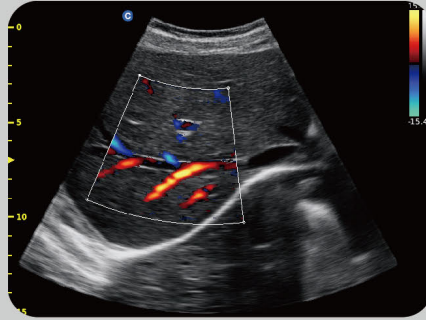
Carotid, 2D steer



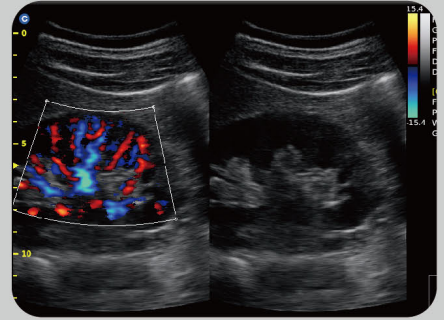
Carotid, Triplex



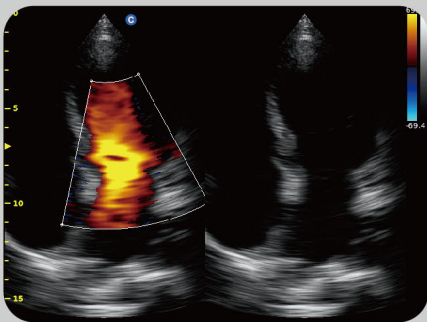
Liver, B Mode



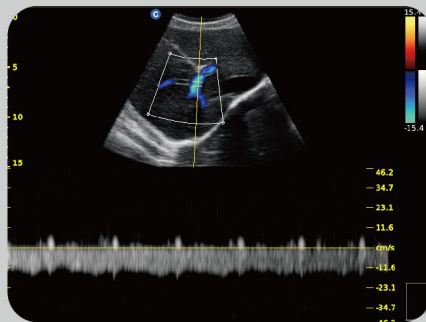
Liver, Color Mode



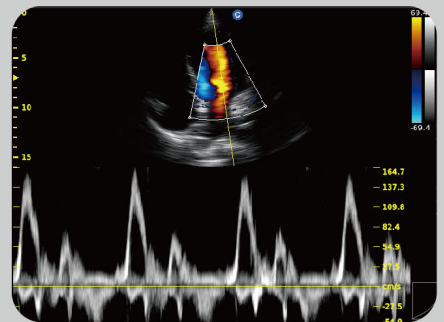
Kidney, B/BC Mode



Cardiac, B/BC Mode



Liver, PW Mode



Cardiac, PW Mode



2.5MHz-5.0MHz Convex  
C3-A



5.3MHz-10.0MHz Linear  
L7M-A



5.3MHz-11.0MHz Linear  
L7S-A



4.5MHz-8.0MHz Transvaginal  
V6-A



5.0MHz-10.0MHz Trans-Rectal  
R7-A



2.5MHz-4.5MHz Phased Array  
P3-A



2.5MHz-5.0MHz Micro-Convex  
MC3-A



4.5MHz-8.0MHz Micro-Convex  
MC6-A

## CHISON Medical Technologies Co., Ltd.

### Sales & Service Contact Address:

No.9, Xinhuihuan Road, Xinwu District, Wuxi, Jiangsu, China 214028

TEL : 0086-510-85310593 / 85310937

FAX : 0086-510-85310726

EMAIL : export@chison.com.cn