

EBit 50



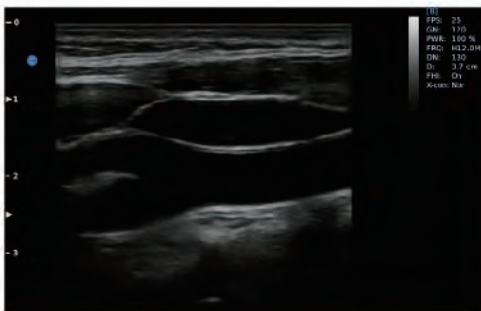
Ergonomic Design

I need a portable, light-weight ultrasound which is easy to go, easy to diagnose, easy to operate with sufficient measurement packages.

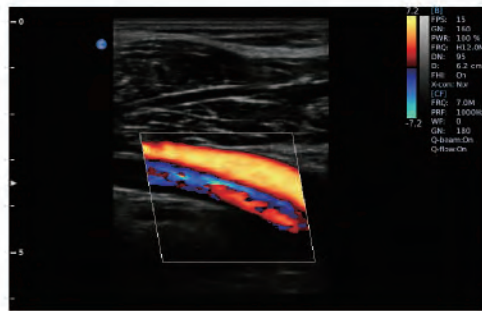


- Independent angle 15" LED (0° - 30° tilted)
- Lightweight (7.5Kg / 16.5lbs)
- Dual transducer ports (Built-in)
- Probe holders
- Removable battery , 120 minutes in active mode

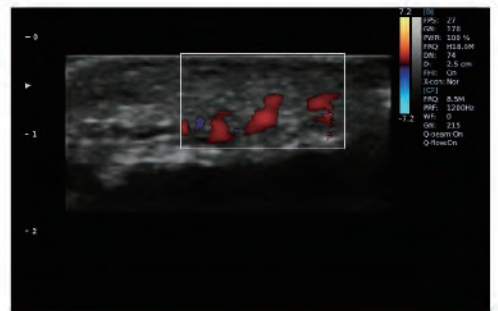
- Theft-proof lock
- Dediceted adapter Space
- Printer socket
- Accessory box
- Trolley height adjustable (Three levels available)



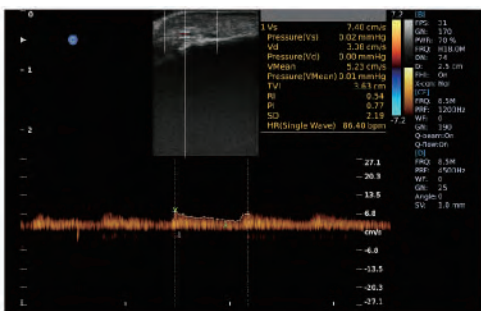
CCA, ICA, ECA, B Mode



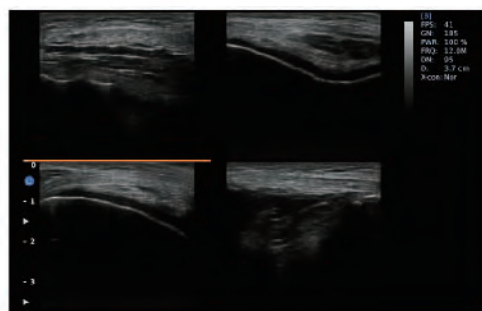
Popliteal Artery and Vein



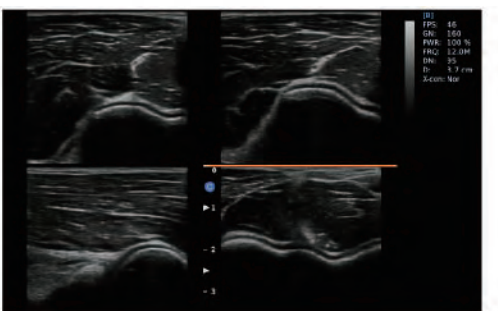
Fingertips Vessle, C Mode



Fingertips Vessle, PW Mode



Knee , 4B Mode

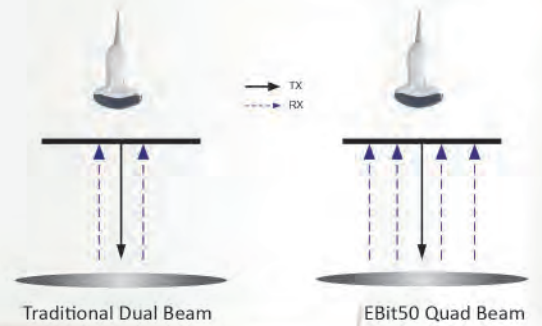


Elbow Joint, 4B Mode

General Imaging

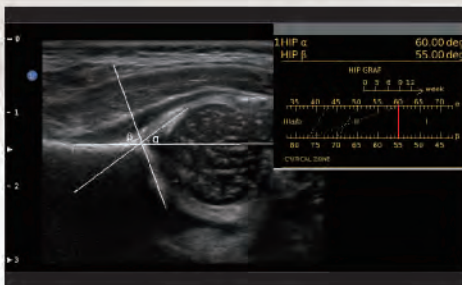
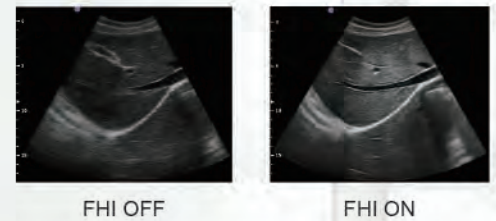
Q-beam

- Compared to the traditional dual-beam former on most ultrasound machines, the EBit50 uses quad-beam technology for ultrasound signal receiving.
- Doubles the volume of signals received from traditional methods, increasing image resolution and generating more accurate images.
- Produces higher frame rates, ensuring better diagnostic confidence and efficiency, especially for moving organs.



FHI

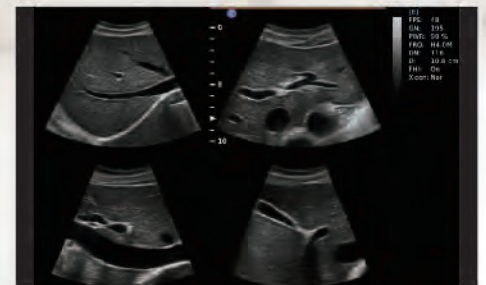
- FHI is an innovative harmonic imaging technology that uses multiple transmission and receiving methods based on the patients' size and weight. This allows the EBIT to maintain image resolution when imaging larger patients.
- Traditional Tissue Harmonics and Phased Harmonics compromise image quality and resolution when penetration is increased.
- Chison's FHI technology greatly improves diagnostic abilities and clinical confidence in larger, difficult-to-image patients.



HIP Graf



Gallbladder stone, B Mode



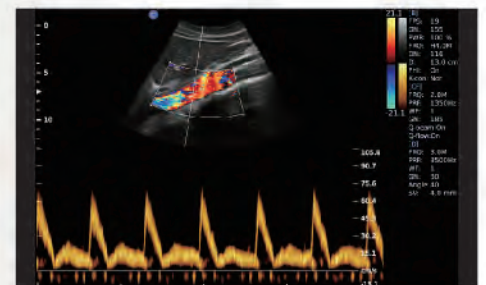
Abdomen, 4B Mode



Pancreas, B/BC Mode



Umbilical cord, C Mode



Aorta Artery, PW Mode

Specifications

- B, 2B, 4B, B / M
- CFM
- PW
- PD, DPD(Direction Power Doppler)
- Duplex, Triplex
- Trapezoidal
- Chroma B / M / PW
- Super Needle (option)
- 2D steer
- Auto IMT
- HIP Graf
- DICOM (option)

Image Processing Technologies

- FHI
- Q-beam
- Q-flow
- Q-image
- X-contrast
- SRA
- Compound Image

Comprehensive Applications

- OB/GYN
- Urology
- Pediatric
- Radiology
- Internal Medicine
- Small Parts
- General Imaging
- Vascular
- Intensive Care
- Emergency
- MSK

Accessories

- Footswitch
- Trolley
- Suitcase
- Video Printer
- PC Printer



2.0 - 6.8 MHz
Convex C3-E



4.0 - 15.0 MHz
Linear L7-E



7.0 - 18.0 MHz(With FHI)
Linear L12-E



4.0 - 15.0 MHz
Linear L7W-E



4.0 - 12.0 MHz
Transvaginal V6-E



4.0 - 15.0 MHz
Transvaginal V7-E



4.0 - 15.0 MHz
Trans-Rectal L7R-E



2.0 - 6.8 MHz
Micro-Convex MC3-E



4.0 - 12.0 MHz
Micro-Convex MC6-E



4.0 - 10.7 MHz
Micro-Convex MC5-E

CHISON Medical Technologies Co., Ltd.

Sales & Service Contact Address:

No.9, Xinhuihuan Road, Xinwu District, Wuxi, Jiangsu, China 214028

TEL : 0086-510-85310593 / 85310937 FAX : 0086-510-85310726 EMAIL : export@chison.com.cn

We reserve the right to make changes to this catalogue without prior notice
Please contact our local dealer for the latest information.

EBit 50-119017